

## Stealth Electric Outboards

Finally! A powerful all electric outboard that will plane your boat!  
Stealth Electric Outboards is your one stop for a complete solution.

# STEALTH

***STEALTH 115HP***

***All  
Electric  
Outboard***

**POWERFUL  
AND  
AFFORDABLE!**



## About The Stealth 115HP

The outboard starts out life as a brand new 2 stroke outboard without the power head, supplied by a Yamaha competitor.

All the components on this outboard, with the exception of the all electric power head, can be replaced with parts from a local Yamaha Marine dealer.

The Stealth 115HP is powerful enough to plane boats with an average package weight of up to 3,550 pounds.

The 115HP comes with a single lever remote control that controls both speed and direction in one smooth motion by wire, eliminating the need for steel cables and frequent adjustment.

With a peak horsepower of 115 and a price of only \$13,699 the Stealth 115HP stands apart from the competition and is in a class of it's own.



## It's All About The Chemistry!

We chose Lithium Nickel Manganese Cobalt Oxide ( $\text{LiNiMnCoO}_2$ ), more commonly known as NMC, as our battery chemistry of choice. The short explanation as to why is that it is the best combination of power, weight, size and price.



For the Stealth **115HP**, we provide complete plug and play battery systems that include a battery pack and active cell balancing in an IP67 water resistant case, charger and state of charge meter. We also include all needed cables, including snap together quick connects. Installation is fast and easy. We have everything you need to hit the water.



# We Provide A Complete Solution

**The Stealth Throttle** controls speed and direction with a single lever action with these great features:

- Single lever speed and direction control by wire.
- No more steel cables to adjust!
- 16-foot Throttle Cable
- Kill Switch
- Locking Neutral Position



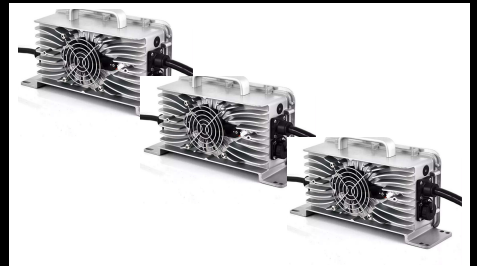
## Stealth Battery Connection Kit and Battery Monitor

- 8ft Battery Connection Harness to connect your batteries to your Stealth Electric Outboard.
- Battery monitor to calculate ampere-hours consumed and the state of charge of a battery.



## Tripple Stealth Lithium-Ion Battery Chargers

- Input Voltage AC: 90-265 VAC
- Power: 2,880W
- (Faster charging options available)



## Stealth Lithium-Ion NCM Battery

- 144.3 Volt Power Supply
- 6X, 48V/120Ah With Smart BMS



## Wireless Monitoring

Integrated wireless Controller Android based software via Bluetooth monitors Motor and Controller Temp, Motor RPM, Phase Current, Battery DC Voltage, Throttle Position and more on your favorite Android phone or tablet.



Parameter	Value	Unit	Setting Dir	Value	
Error Status					
TPS Pedal	255	Hall A	0	Setting Dir	0
Brake Pedal	4	Hall B	0	Actual Dir	0
Brake Switch	0	Hall C	0	Brake Switch2	0
Fast Switch	0	B+ Volt	94	Low Speed	0
Forward Switch	0	Motor Temp	133	Motor Speed	3667
Reversed	0	Controller Temp	24	Phase Current	188

## Specifications:

<b>PEAK HORSEPOWER</b>	<b>115 HP</b>
<b>CONTINUOUS POWER</b>	<b>70 HP</b>
<b>VOLTAGE</b>	<b>144 VDC</b>
<b>PEAK CURRENT</b>	<b>600 AMPS</b>
<b>MOTOR TYPE</b>	<b>PMSM/IPM</b>
<b>COOLING SYSTEM</b>	<b>WATER COOLED</b>
<b>CONTROL</b>	<b>REMOTE AND TILLER</b>
<b>THROTTLE</b>	<b>SIDE MOUNT, 16' CABLE</b>
<b>GEAR RATIO</b>	<b>1.85:1</b>
<b>TRIM &amp; TILT</b>	<b>POWER TILT</b>
<b>PROPELLER</b>	<b>3- 11.125 X 13"</b>
<b>WEIGHT</b>	<b>253 LBS</b>
<b>TRANSOM HEIGHT</b>	<b>20"</b>



**Stealth Electric Outboards**  
**713-391-6550**  
**[www.stealthelectricoutboards.com](http://www.stealthelectricoutboards.com)**